



STRIKE X - ST

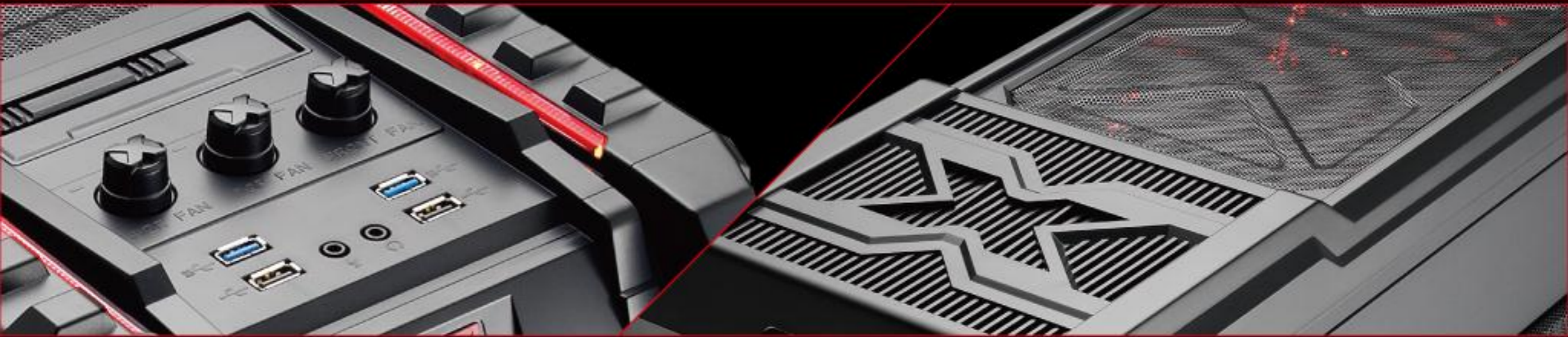


ST

BLACK / DEVIL RED

CASE

DESIGN CONCEPT



After its debut in the 2011 Computex show, the long awaited Strike-X ST is finally ready for shipping. This is a dream come true for those gaming crazy users or those who never get enough space out of the PC cases. Strike-X ST (stands for Super Tower) is one of the roomiest yet most functional case you'll find in the high-end PC case market. This case comes with tons of features: the 3-knob fan controller controls up to 18 fans in total, hot-swap HDD docking for 2.5" and 3.5" HDDs, dual power supply capability, install up to 10 HDDs, and much more!

With Strike-X ST, you will not have to worry about the cooling and space issues for a very long time. Your demand is met once for all!



ST

BLACK / DEVIL RED

CASE

FEATURES



- High performance "Full-Tower" for gamers and enthusiast.
- Aggressive "X" concept design case - a gamer's dream !!
- Solidly constructed chassis interior of 0.8mm SECC Japanese Steel.
- Pre-installed 3 units of "fan adaptor PCB boards" allows connections up to 18 fans that can be controlled with the built-in fan controller with adjustable knobs.
- Supports longer high-end VGA cards up to 430 mm.
- Supports 4 x 5 1/4" bays and maximum 10 x 2.5"/3.5" HDDs (internal) with 1 x 2.5"/3.5" hot-swap docking station on top panel.
- 2 x USB 3.0 + 2 x USB 2.0 and Audio/Mic ports are easily accessible from the top panel.
- Pre-drilled holes for cable management with high-end rubber protection to help tidy up the cable mess.
- CPU holes is pre-drilled on the MB plate for ease of CPU cooler assembly.
- Wheels are included to make maneuvering an easy task.
- Includes front and bottom washable "Dust Filter" to prevent dust.
- Includes anti-vibration rubber to protect your HDDs and PSU from shock.
- Supports DUAL power supply installation for power-hungry users.
- Supports the latest XL-ATX MB such as Gigabyte's latest X58-UD9 Motherboard and also has 10 PCI slots to support Quad VGA cards.
- Water-cooling holes are pre-drilled to support water-cooling systems!!
- Extreme Cooling Capability – Users can install up to max. 21 fans in this case!
1 x 20cm RED LED intake front panel fans (included),
1 x 14cm RED LED exhaust back panel fans (included),
1 x 20cm RED LED exhaust top panel fan (included).



ST BLACK

CASE

GALLERY





ST DEVIL RED

CASE

GALLERY





ST

BLACK / DEVIL RED

CASE

SPECIFICATIONS

Case type	Full Tower
Material	SECC 0.8mm
Motherboard	Micro ATX/ATX/E-ATX/XL-ATX/HPTX
Case dimensions	635mm (H) x 230mm (W) x 700mm (D)
Drive bays	4x 5.25" (Exposed) / 10x 3.5" HDD or 2.5" HDD / 1x 3.5"+2.5" HDD hot swap slot
Expansion slots	10
Max. length space available for PCI slots	430mm
I/O ports	2x USB 3.0 / 2x USB2.0 / Audio+Mic



COOLING SYSTEM

Front 200 x 200 x 30 mm
"Quad RED LEDs"



Top 200 x 200 x 30 mm
"Quad RED LEDs"



Back 140 x 140 x 25 mm
"Quad RED LEDs"



Rated Voltage	: 12V	12V	12V
Starting Voltage	: <=9V(Power ON/OFF)	<=9V(Power ON/OFF)	<=6V(Power ON/OFF)
Power Consumption	: 3.0W	3.0W	4.68W
Rated Current	: 0.25A	0.25A	0.39A
Speed	: 800± 200 R.P.M	800± 200 R.P.M	1500 ± 10%RPM
Air Flow	: 63.893 CMF	63.893 CMF	84.817 CMF
Air Pressure	: 0.363 MM-H2O	0.363 MM-H2O	1.171 MM-H2O
Noise	: 24.4dBA	24.4dBA	33.0dBA
MTBF	: 100000 hours	100000 hours	100000 hours



ST

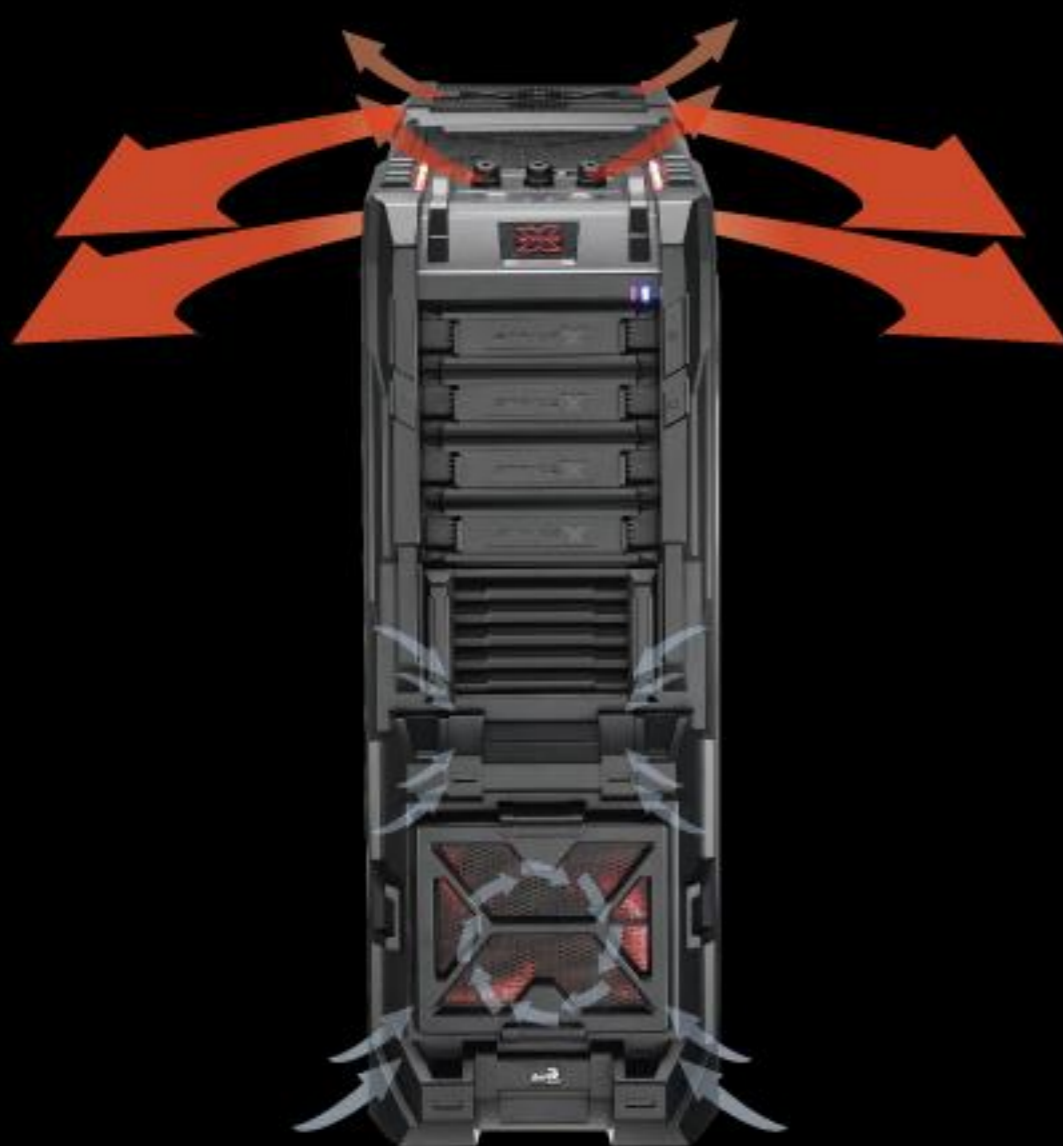
BLACK / DEVIL RED

CASE

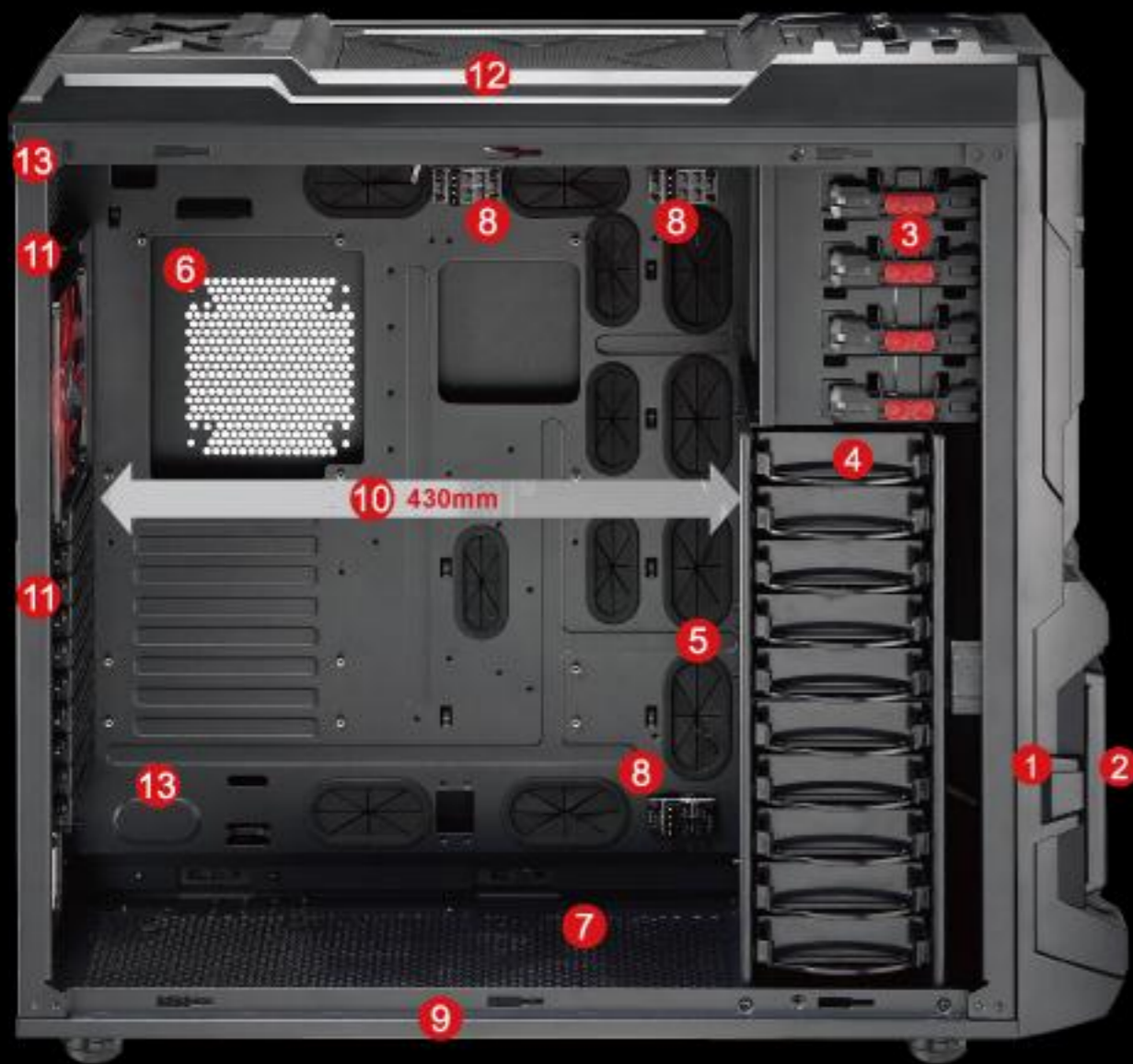
AIR FLOW

Superb airflow - install up to 21 fans !!

1. Front - 2 x 12 or 2 x 14 or 1 x 20cm RED LED fans (1 x 20cm included)
2. Top - 3 x 12 or 3 x 14 or 2 x 20cm RED LED fans (1 x 20cm included)
3. Bottom - 3 x 12 or 3 x 14 or 2 x 20cm RED LED fans (optional)
4. Right Side - 1 x 9 or 1 x 12cm fan (optional)
5. Left Side - 9 x 12cm fans or 1 x 20cm fan (optional)
6. Rear - 1 x 12 or 1 x 14cm fan (1 x 14cm included)
7. Behind HDD rack - 2 x 14cm fan (optional)



INSIDE



13
Dual power installation
- upper position
- bottom position



9
Washable dust filter
for the bottom vent
holes



5
Pre-drilled holes for
cable management
"with Rubber
protection"



1
Front air intake 20cm
fan with Red LEDs



14
Hot-swap HDD slot
on top panel (3.5")



10
Sufficient depth of
chassis for installing
long cards



6
Can install 1x12cm
fan on right side panel
adjacent to CPU for
added cooling per-
formance



2
Washable dust filter
at the front air intake



15
Hot-swap HDD slot
on top panel (2.5")



11
Pre-drill pipe holes
for water cooling



7
Can install 1x20
cm fan at bottom of
case



3
Tool-free for 5.25" bay



17
Install up to 9 x 12cm
fans or 1 x 20cm fan
on side panel



16
3-channel fan con-
troller w/ USB 3.0 x 2
& USB 2.0 x 2



12
Can install up to 2 x
20cm fans on top
panel to extract heat
from chassis



8
Added PCB provide
extra fan
connection and
reduce cable mess



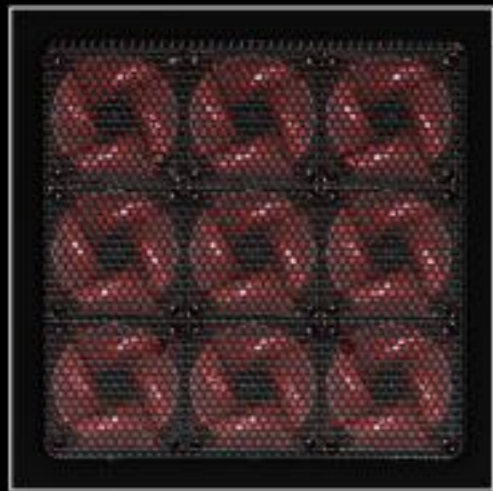
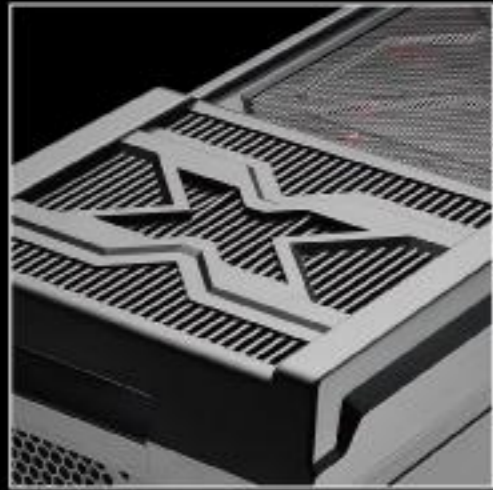
4
Squeeze and pull
HDD tray



ST BLACK

CASE

CLOSE UP

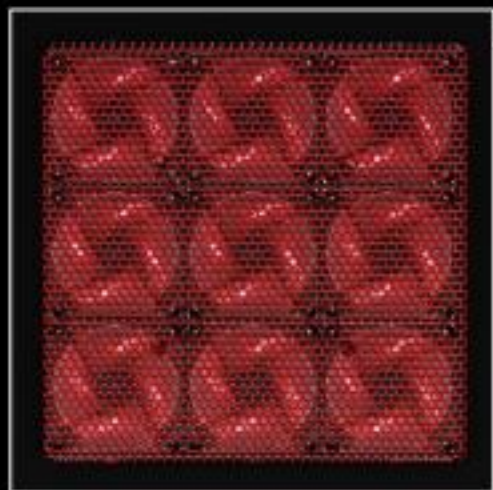
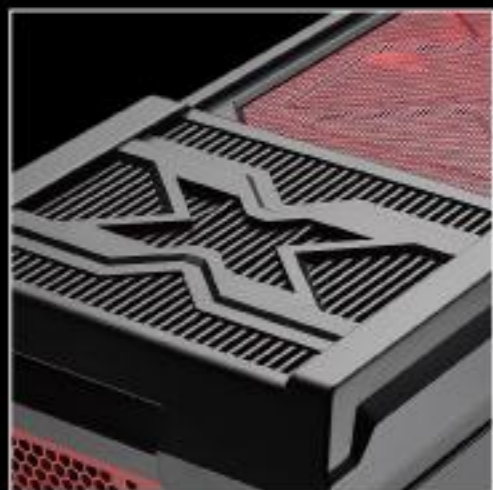




ST DEVIL RED

CASE

CLOSE UP



STRIKE X