



Aero

SIXTH ELEMENT



# SIXTH ELEMENT

WHITE EDITION

THE PROFESSIONAL SERIES







Red



"Value Series" : Best VALUE gaming cases with the highest C/P Ratio (Cost to Performance ratio).



"Professional Series – Red label" : Super tower or Super mid-tower cases with elegant, clean line designs.



"Aluminum – Silver label" : Unique "Full aluminum" cases targeting at power users, professionals and gamers.



"Ultimate Gaming Series – Black label" : Ultimate gaming cases targeting at the extreme gamers. This Series offers gamers with most functions, expandability and Extreme cooling.



"Compact – Blue Label" : Small form factor case series including cube cases, mini-ITX and Mini-Tower (Micro-ATX).



## Sixth Element White Edition

As mysterious as its name suggests, the new 6th Element case is constructed with simple geometric shape in mind that makes up its uniqueness and stands out among the crowd.

This chassis is solidly constructed in 0.6mm SECC Japanese steel and beautifully finished both inside and out. Not only the chassis is beautifully finished in All White(both interior and exterior) color with the "PCI covers", "cable management protection rubber" , "HDD tray" and "screw-less kits" remained in black color to make the chassis the One and Only gaming gear as special as its name.

Moreover, the 6th Element is extremely "User-Friendly" and it gives gamers great expandability and versatility. Its "Screw-less" features and pre-drilled holes on the Motherboard plate for cable routing make this chassis an easy install. The Pre-drill cable routing holes are also protected by high quality rubber to prevent cable damages from sharp edges. A CPU hole is also pre-drilled on the MB plate for ease of cooler assembly and removable.

This chassis offers great expansion capabilities. It can support 4 x 5 1/4" devices, 1 x 3 1/2" device (external) with converter bracket (included)and 6 x Hard Drives. The chassis is also deep enough to support Long High End VGA cards up to 400mm in length (when the middle HDD cage is removed). With the Middle HDD cage installed, the chassis can support long VGA cards up to 280mm in length.

It maximized airflow with fans including front in-take 14cm fan (included), Top Exhaust 14cm (included), Back Exhaust 8 or 12cm fan (optional), and 2x12cm or 14cm side panel fans (optional). A removable PSU dust filter is included to prevent dust entering your computer.





Front



Back



Top



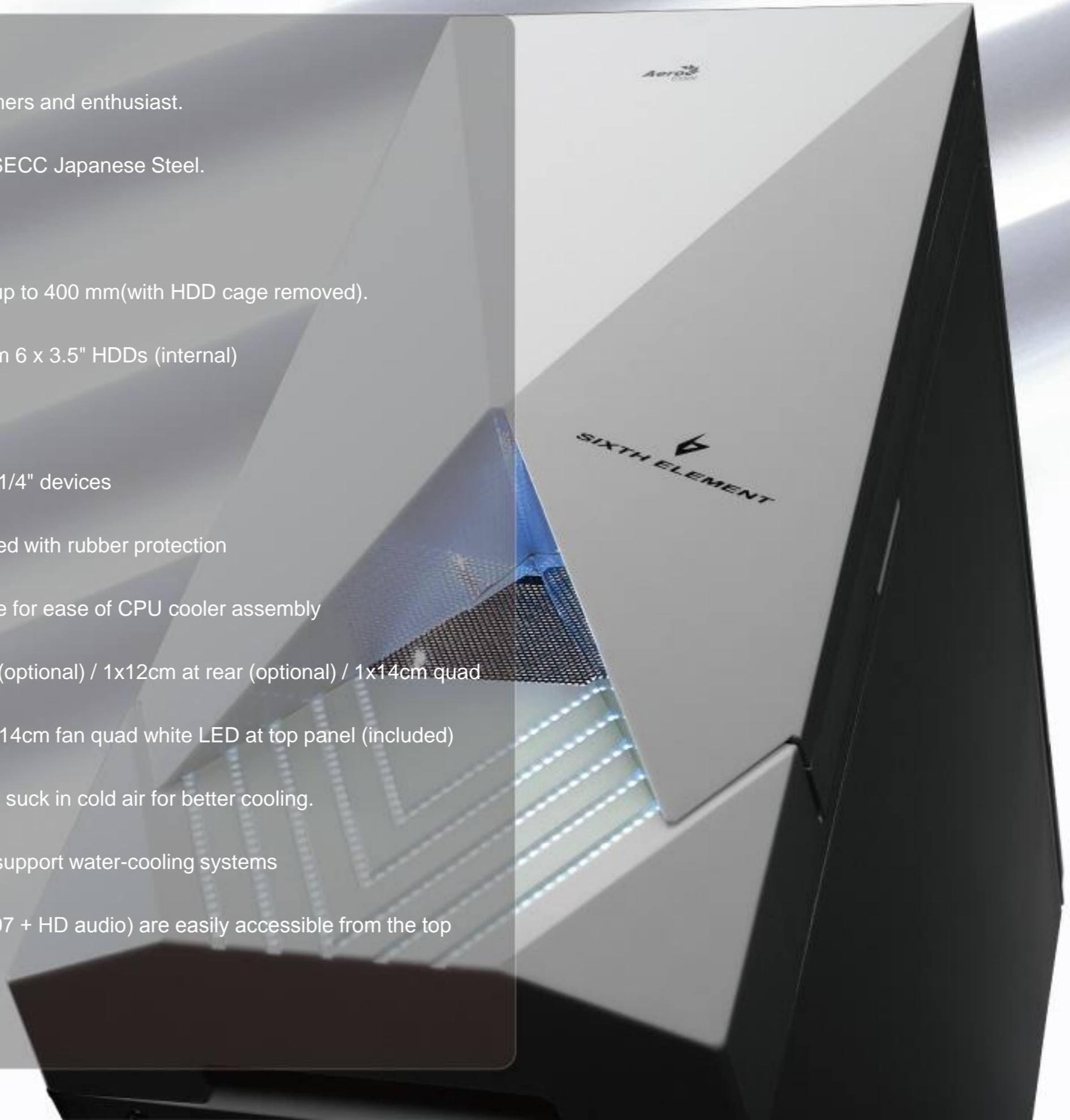
Side



Open

Photos are for exterior reference only. Not all fans are inclusive. Please see specification page.

- High performance "Mid-Tower" for gamers and enthusiasts.
- Solidly constructed chassis – 0.6mm SECC Japanese Steel.
- ALL White interior for an unique touch!
- Supports longer high-end VGA cards up to 400 mm(with HDD cage removed).
- Supports 4 x 5 1/4" bays and maximum 6 x 3.5" HDDs (internal)
- 90 degree retractable HDD bracket
- "Easy-install" screw-less kits for the 5 1/4" devices
- Cable management holes are pre-drilled with rubber protection
- CPU hole is pre-drilled on the MB plate for ease of CPU cooler assembly
- Can install 2x12cm fans at side panel (optional) / 1x12cm at rear (optional) / 1x14cm quad white LED fan in front (included) and 1x14cm fan quad white LED at top panel (included)
- Bottom PSU position enables PSUs to suck in cold air for better cooling.
- Water-cooling holes are pre-drilled to support water-cooling systems
- 2 x USB/ 1 x eSATA / Audio+Mic (AC'97 + HD audio) are easily accessible from the top panel.



## Specifications

Case Type	:	Middle Tower
Material	:	SECC 0.6mm
Motherboards	:	ATX & Micro ATX
Chassis Dimensions	:	510(H) x 197(W) x 530(D)
Drive Bays	:	4 x 5.25" (External) 、 1 x 3.5" (w/adaptor) 、 6 x 3.5" HDDs (internal)
Expansion Slots	:	7 Slots
Max length space available for PCI slots	:	280 / 400mm (HDD cage removed)
I / O Ports	:	2 x USB2.0 / e-SATA / Mic & headphone (AC97 & HD audio)

## Cooling System

**Front 14 x 14 x 25cm**  
"Quad WHITE LEDs"



**Top 14 x 14 x 25cm**  
"Quad WHITE LEDs"

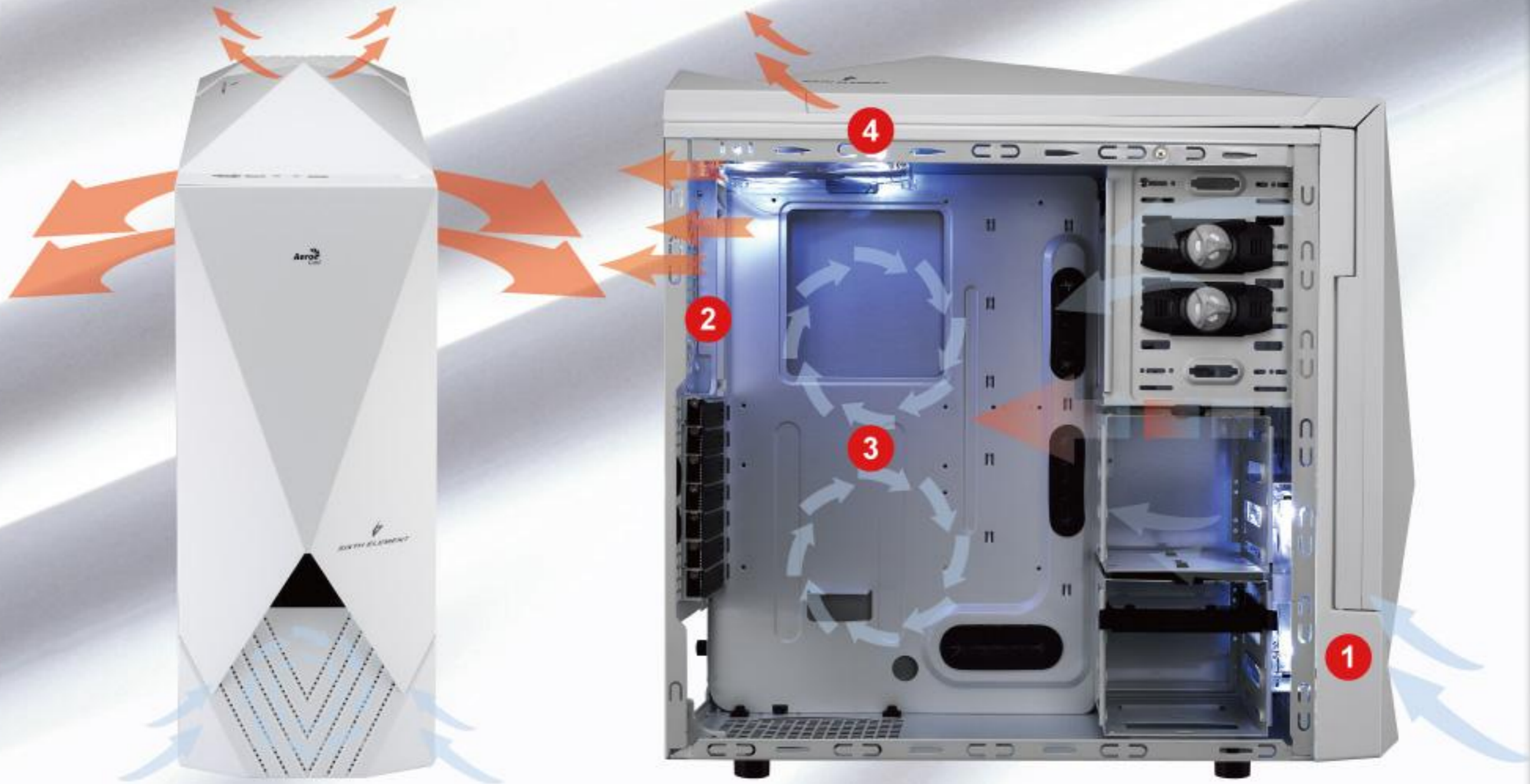


Rated Voltage	:	12V	12V
Starting Voltage	:	<=6.0V	<=6.0V
Power Consumption	:	4.32W	4.32W
Rated Current	:	0.36A	0.36A
Speed	:	1500 RPM+-10%	1500 RPM+-10%
Air Flow	:	96.5 CMF	96.5 CMF
Air Pressure	:	1.069 mm-H2O	1.069 mm-H2O
Noise	:	29.6dBA	29.6dBA
MTBF	:	100000 hours	100000 hours



Superb airflow - install up to 5 fans !!

1. Front - 1 x 14cm WHITE LED fan included
2. Back - 1 x 12cm fan (optional)
3. Side - 2 x 12 cm fans (optional)
4. Top - 1 x 14 WHITE LED fan included



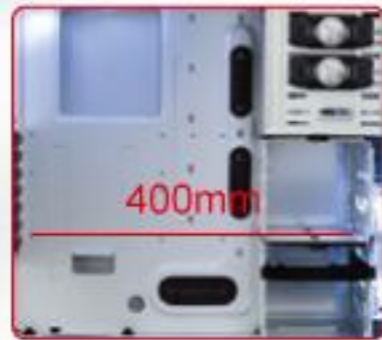




Pre-drill pipe holes for water cooling w/meshed PCI slot "High Quality Mesh PCI Cover"



Filter included to prevent dust from entering PSU



Sufficient depth of chassis for installing long cards (HDD cage removed)



Pre-drilled holes for cable management "with Rubber protection".



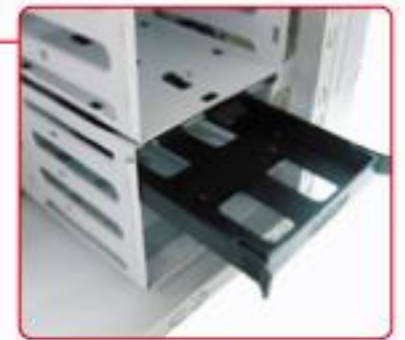
Tool-free for 5.25" bay



HDD Cage is removable



HDD cage fits three HDDs (screwless)



HDD tray supports 3.5" HDD and 2.5" SSD









**SIXTH ELEMENT**

*WHITE EDITION*

*THE PROFESSIONAL SERIES*

